

**ADD1 Antibody (Center)**  
**Purified Rabbit Polyclonal Antibody (Pab)**  
**Catalog # AP22310c****Specification**

---

**ADD1 Antibody (Center) - Product Information**

Application	WB, FC,E
Primary Accession	<a href="#">P35611</a>
Other Accession	<a href="#">Q5RA10</a>
Reactivity	Human
Host	Rabbit
Clonality	polyclonal
Isotype	Rabbit IgG
Calculated MW	80955

**ADD1 Antibody (Center) - Additional Information****Gene ID** 118**Other Names**

Alpha-adducin, Erythrocyte adducin subunit alpha, ADD1, ADDA

**Target/Specificity**

This ADD1 antibody is generated from a rabbit immunized with a KLH conjugated synthetic peptide between 428-462 amino acids from the Central region of human ADD1.

**Dilution**

WB~~1:2000

FC~~1:25

E~~Use at an assay dependent concentration.

**Format**

Purified polyclonal antibody supplied in PBS with 0.09% (W/V) sodium azide. This antibody is purified through a protein A column, followed by peptide affinity purification.

**Storage**

Maintain refrigerated at 2-8°C for up to 2 weeks. For long term storage store at -20°C in small aliquots to prevent freeze-thaw cycles.

**Precautions**

ADD1 Antibody (Center) is for research use only and not for use in diagnostic or therapeutic procedures.

**ADD1 Antibody (Center) - Protein Information****Name** ADD1**Synonyms** ADDA

**Function** Membrane-cytoskeleton-associated protein that promotes the assembly of the spectrin-actin network. Binds to calmodulin.

**Cellular Location**

Cytoplasm, cytoskeleton. Cell membrane; Peripheral membrane protein; Cytoplasmic side

**Tissue Location**

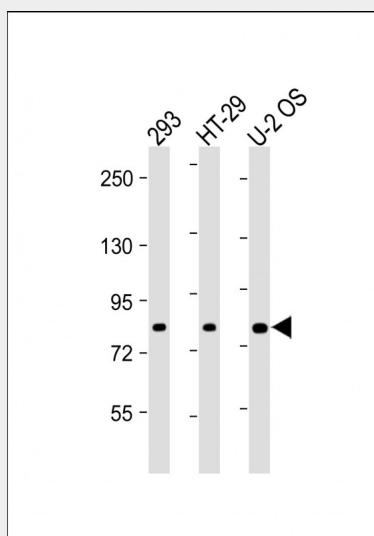
Expressed in all tissues. Found in much higher levels in reticulocytes than the beta subunit

**ADD1 Antibody (Center) - Protocols**

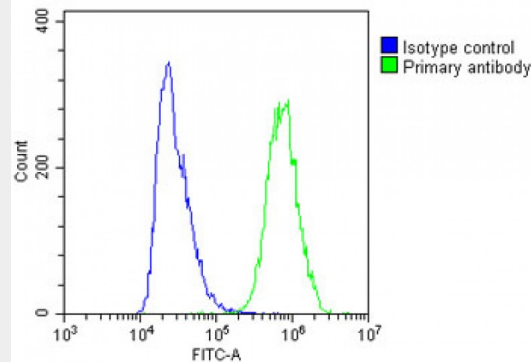
Provided below are standard protocols that you may find useful for product applications.

- [Western Blot](#)
- [Blocking Peptides](#)
- [Dot Blot](#)
- [Immunohistochemistry](#)
- [Immunofluorescence](#)
- [Immunoprecipitation](#)
- [Flow Cytometry](#)
- [Cell Culture](#)

**ADD1 Antibody (Center) - Images**



All lanes : Anti-ADD1 Antibody (Center) at 1:2000 dilution Lane 1: 293 whole cell lysate Lane 2: HT-29 whole cell lysate Lane 3: U-2 OS whole cell lysate Lysates/proteins at 20 µg per lane. Secondary Goat Anti-Rabbit IgG, (H+L), Peroxidase conjugated at 1/10000 dilution. Predicted band size : 81 kDa Blocking/Dilution buffer: 5% NFDM/TBST.



Overlay histogram showing A431 cells stained with AP22310c(green line). The cells were fixed with 2% paraformaldehyde and then permeabilized with 90% methanol for 10 min. The cells were then incubated in 2% bovine serum albumin to block non-specific protein-protein interactions followed by the antibody (1:25 dilution) for 60 min at 37°C. The secondary antibody used was Goat-Anti-Rabbit IgG, DyLight® 488 Conjugated Highly Cross-Adsorbed at 1/200 dilution for 40 min at Room temperature. Isotype control antibody (blue line) was rabbit IgG1 (1µg/1x10<sup>6</sup> cells) used under the same conditions. Acquisition of >10, 000 events was performed.

#### **ADD1 Antibody (Center) - Background**

Membrane-cytoskeleton-associated protein that promotes the assembly of the spectrin-actin network. Binds to calmodulin.

#### **ADD1 Antibody (Center) - References**

Joshi R.L.,et al.J. Cell Biol. 115:665-675(1991).  
Goldberg Y.P.,et al.Hum. Mol. Genet. 1:669-675(1992).  
Lin B.,et al.Genomics 25:93-99(1995).  
Ota T.,et al.Nat. Genet. 36:40-45(2004).  
Hillier L.W.,et al.Nature 434:724-731(2005).